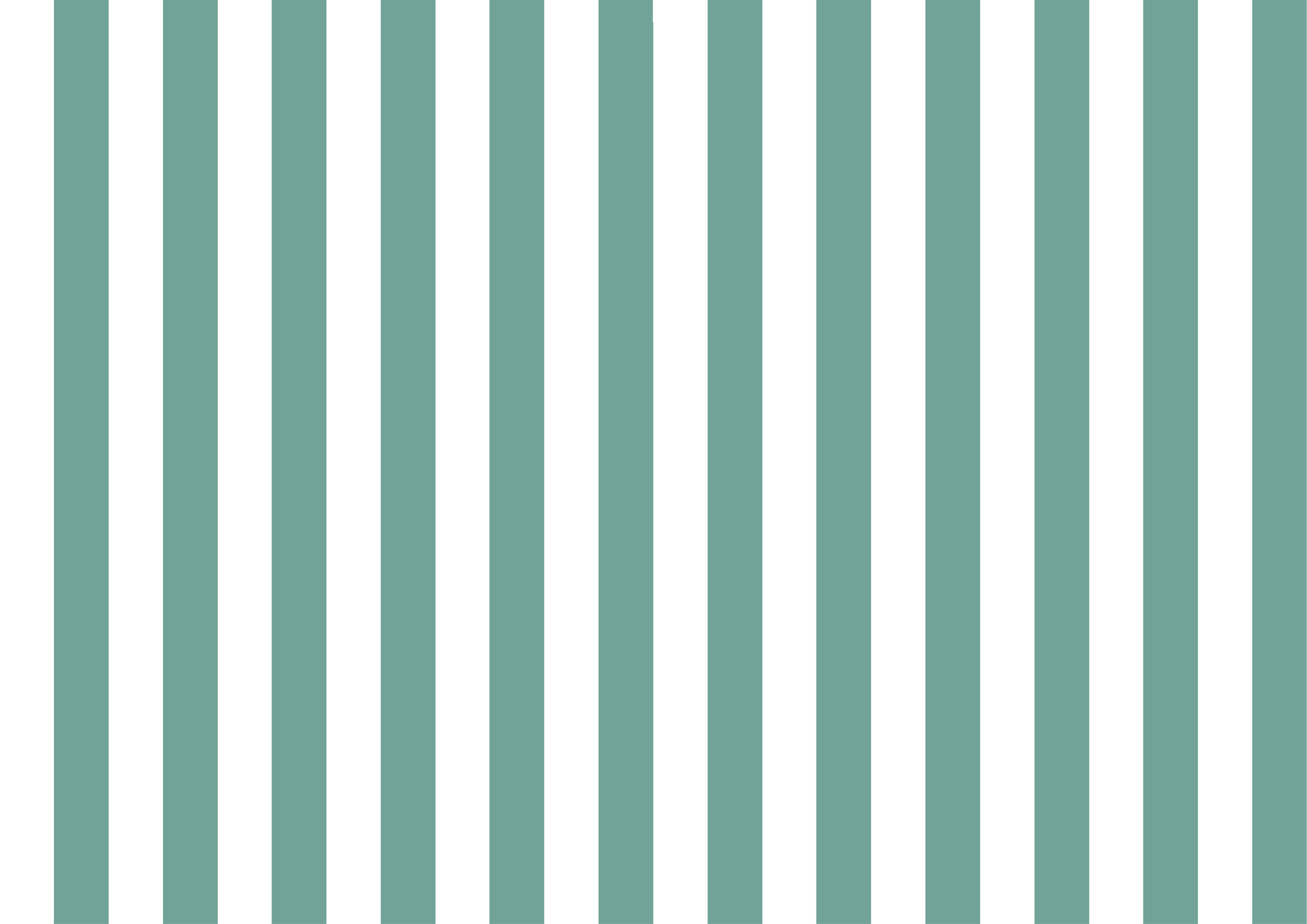




*the dream*

global  
conservatory roof





**global**  
conservatory roof



## Foreword

*Naming a book after a product means revealing all. More precisely it means making clear the link between our dreams for enhancing our homes and lives, and the products that turn those dreams into reality. Even dreams need a solid foundation of experience, skills and attention to detail, innovation and technology to make them happen.*

*More than any other product in recent times the conservatory has transformed the look and shape of our homes, and expanded our living space. The conservatory is the link between home and garden, adding pleasure to our lives and value to our homes. A conservatory transforms the way we use our homes and gardens.*

*global is transforming homes throughout the UK. In these pages you will see ideas, suggestions and examples based on the innovations, detailing and build strength of the global conservatory roof to turn your dreams into reality.*



## Contents

### CHAPTER ONE

#### *History*

5

### CHAPTER TWO

#### *From the Outside*

7

### CHAPTER THREE

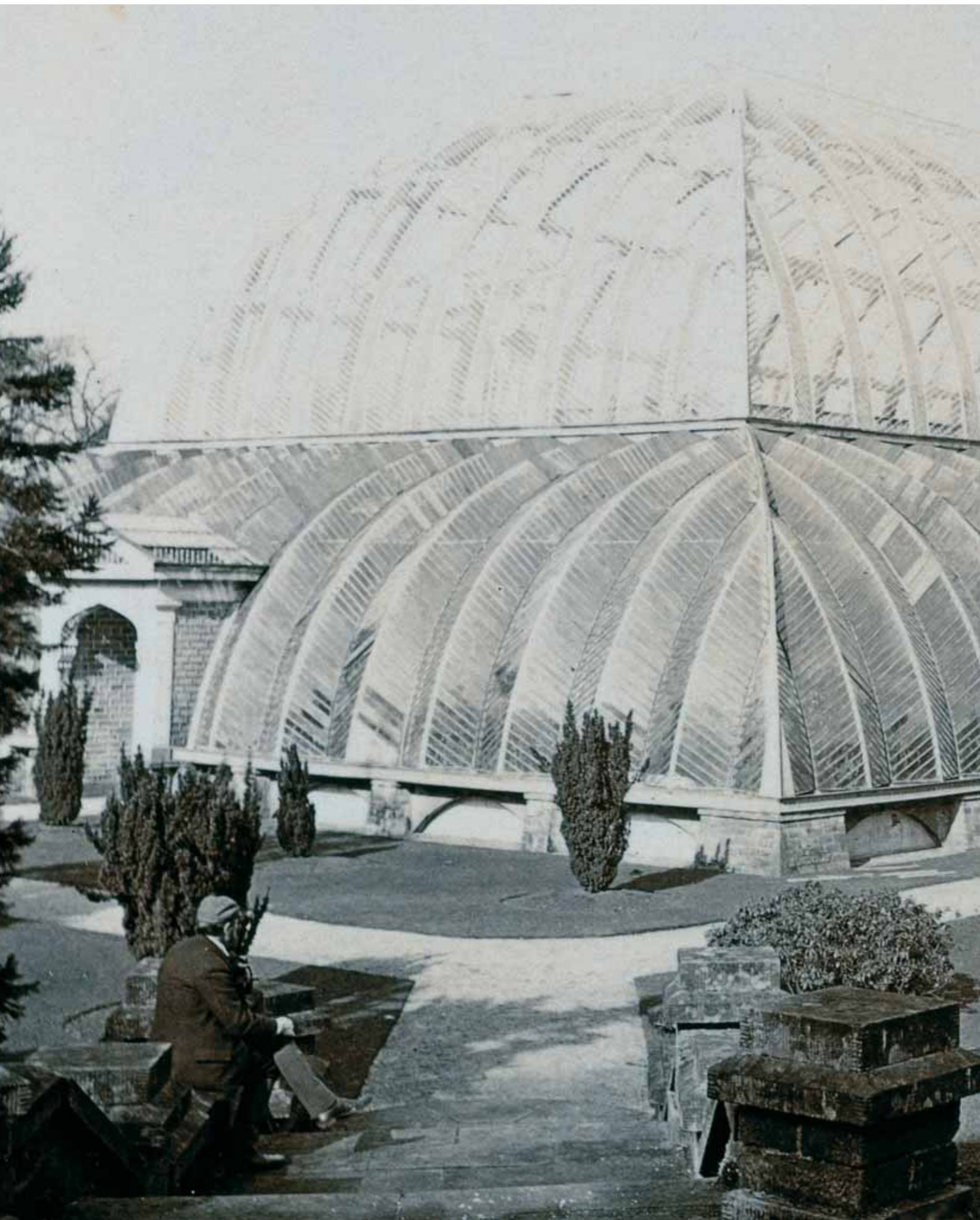
#### *From the Inside*

25

### EPILOGUE

48





# CHAPTER ONE

## History



*The conservatory has a long and exotic history, and while still retaining its luxury status has now become an affordable addition to your property.*

*This was certainly not the case when the conservatory, or garden room, was first introduced in the 18th century. Then it was the preserve of Europe's elite, added to only the grandest homes and often described as an orangerie.*

*These early constructions were predominantly for the protection of exotic palms, and other tender plants during the harsh winter months. These orangeries may originally have been thought of as greenhouses purely for plants, but as interest grew in these new, exotic, and horticultural specimens the rooms soon became popular for more general use. It was a natural progression from home to garden.*

*The buildings were usually very*

*grand, free-standing and tall. With many stone features they overlooked the most impressive grounds. When the summer arrived, large tables and chairs replaced many of the plants to enable dining and entertaining. Glazing techniques at this time were very primitive and it wasn't until many years later that the tile or lead roofs on these first garden rooms were replaced with glass.*

*When glass became a more affordable everyday material the conservatory began to evolve into an iron superstructure. This also helped the architects of the day create ever more elaborate and eye-catching buildings in which glass became the principle element. House plants were at home in these new rooms throughout the year.*

*The Palm House at Kew completed in 1848, briskly followed by the Crystal Palace Exhibition Hall for*

*the 1851 Trade Fair, were two of the finest examples of this early conservatory architecture and marked a turning point in conservatory construction.*

*Very soon middle and upper class England began to adopt this style and adapt it for a domestic environment. Whilst still grand and intricate many conservatories were now on a much smaller scale. The incorporation of finials, crestings, laced window panes, coloured glass, and decorative brackets epitomised this era.*

*Around this time the large dining tables and entertaining areas were sacrificed to make way for plants arriving from the colonies – plants such as orchids, begonias, and tree ferns could now truly be propagated in England. This also meant that seating became confined to small areas suitable only for tea and gossip!*

*This trend continued into Edwardian times, as the conservatory became smaller, more affordable, and therefore more popular. Often furnished with decorative floor tiling, wicker furniture from Madeira, and exotic palms in bright Doulton this room became the venue for a wider range of household leisure pursuits.*

*The First World War brought an abrupt end to the conservatory boom and by the twenties hardly any new conservatories were being erected.*

*It wasn't until about 50 years later that conservatories saw a return to people's homes. Although these new buildings adopted the style of the 1800's they have evolved with larger door openings creating a true link between home and garden - a feature not present on the 'Victorian' conservatory. Yet the purpose is similar to that of the 18th century orangeries – relaxing, entertaining and dining with full garden views.*

*Just as the development of glass and glazing techniques prompted the development of the original conservatory, new designs and engineering techniques have made it a practical room for today. The revived interest in these historic buildings is in part due to developments in ventilation, heating, and even double glazing.*

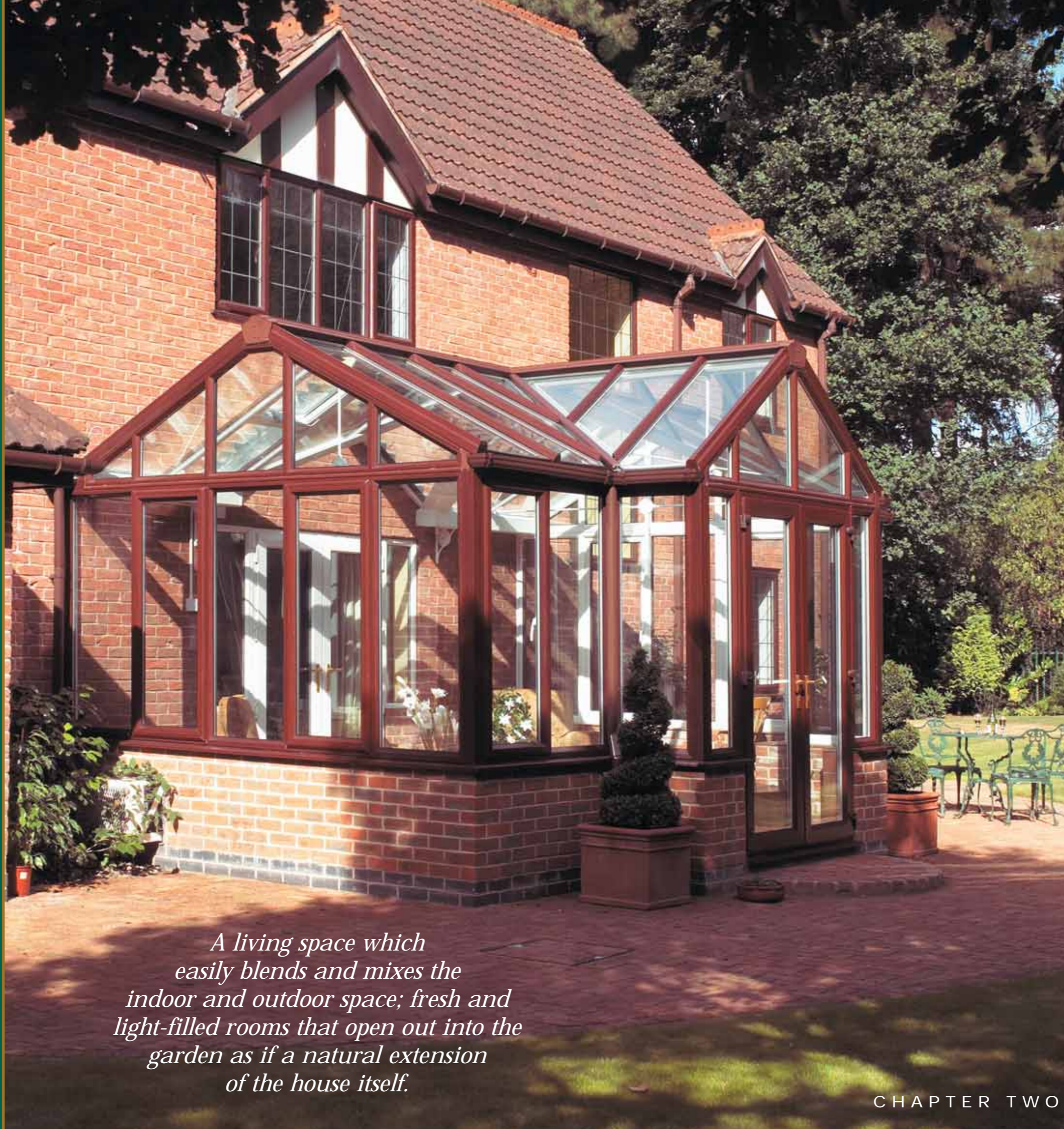
*Today conservatories can be as safe and robust as brick built rooms, therefore opening up the area to many new purposes such as a children's play area, dining room, study, breakfast room to name a few. Conservatory use today is really only limited by the homeowners imagination.*



## CHAPTER TWO

# *From the outside*





## aluminium woodgrain top cappings

Dark colours absorb more heat than light colours. Simple laws of physics have to be considered at the design stage of any product.

All woodgrain global top cappings are foiled onto powder coated aluminium. So when your conservatory is subjected to direct sunlight it does not warp or distort, which would risk the structural integrity and weather fastness.

*A living space which easily blends and mixes the indoor and outdoor space; fresh and light-filled rooms that open out into the garden as if a natural extension of the house itself.*



*A global conservatory guarantees high quality and performance of the highest standards, without making all conservatories the same, while allowing each single building to 'speak the local language', adapting the style of the conservatory to its natural surroundings.*



## boxing clever



Many conservatories require structural box gutter components.

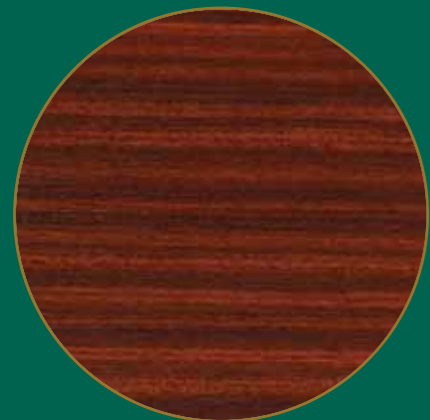
Achieving structural integrity with a product that has to hold a conservatory together, and reduce condensation is tricky.

global has re-written the rule book for box gutters using a clever twin-skin design. Producing a stronger product it also creates an air gap that virtually eliminates the risk of condensation.





*When garden marries home*



mahogany



light oak



cherry

All global wood foil profiles are available on both the inside and outside of the building. Or to complement the style of your home, combinations of these colours with white are also available.



clear



opal



silver/opal  
(external view)



bronze/opal  
(external view)

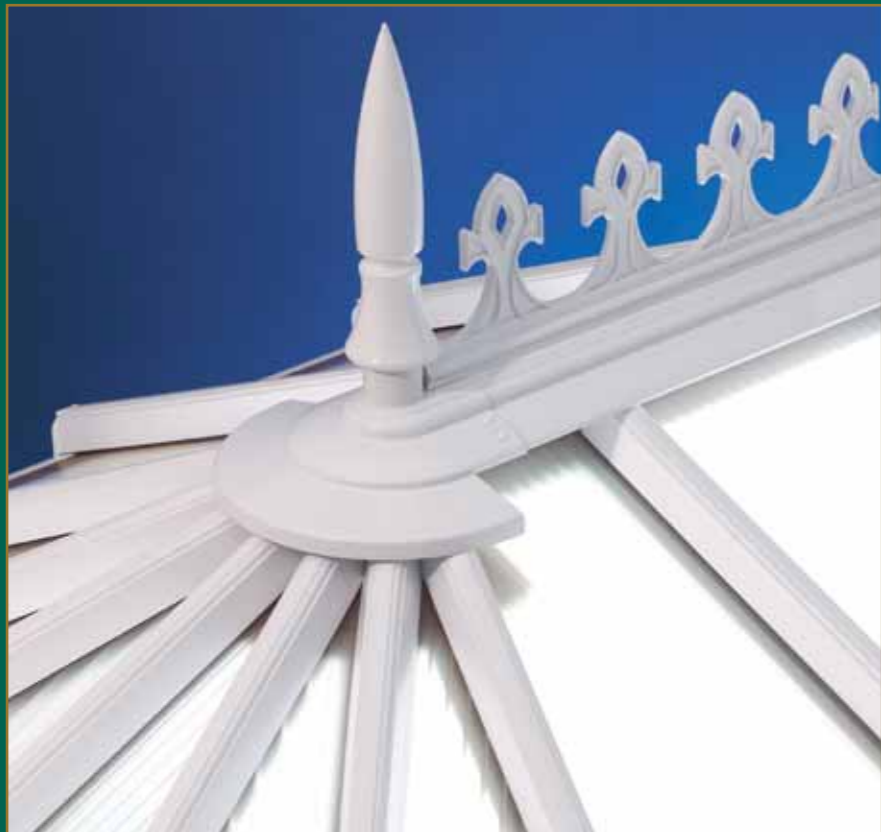


silver/opal &  
bronze/opal  
(internal view)



bronze

The swatches on these pages should be used as a guide and are as accurate as our printing process allows



One of the most visually striking aspects of a conservatory is the cresting.

The uniquely sculptured global cresting not only beautifies your home but also provides performance longevity. The interlocking PVCu sections incorporate an interlock that ensures once connected it retains a perfect line. Even the interlock is shaped as a water shroud!



*Breathe  
new air to  
your home*



## lead flashing



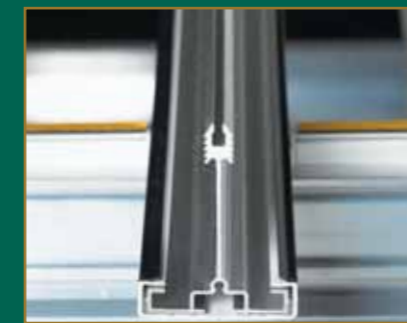
The global soaker bar saves even more time on the installation process but that's secondary to the finish in the most specialised area, lead flashing.

When the glazing bar has been fastened to the wall the lead flashing simply drops into the glazing bar. The sculptured top cap knocks on, exactly the same way. The starter bar leaves a perfect lead flashing line seamlessly connecting house and conservatory. The new improved product incorporates the soaker tray and the lead dresses directly into it, not over the top. Because the drainage channels in global glazing bars are never drilled the water can safely drain directly through the channel into the gutter.





## no holes



Established conservatory installers have to look twice on first seeing a global conservatory. They are accustomed to seeing holes.

While creating a conservatory that securely bolts from the inside, we took the opportunity to eliminate holes

through the glazing bars. It has become customary to accept at least 4 holes per rafter, but with global there are none.

The captive bolt mechanism located at the base of the rafter also abolishes the risk of water penetration through 'fixing holes'.

*The unveiled secret*

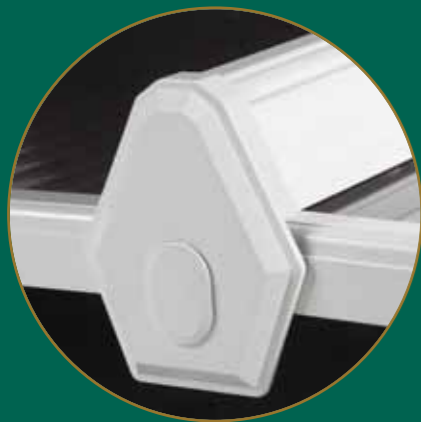
# level heads



All gauges of global glazing rafters have been designed to the same overall dimension, allowing for seamless cross utilisation within the same building.

global's built-in versatility helps transform your dreams into reality.

# end cap



For that finishing touch, all end caps have a chamfer on the visible face to create a more substantial appearance.

Even the polycarbonate closure profile has been designed to co-ordinate perfectly with the glazing bar top cap whilst still maintaining the same colour consistency throughout.



The global finial fastens directly into the ridge top cap, not through it. At no point along the pinnacle of your global conservatory is there a hole for water to penetrate through to the inside of your new room.



*On the road to discovering  
a new lease of life and secrets to guard*



CHAPTER THREE

*From  
the inside*





Versatility can be a truly challenging obstacle. In fact certain roofing systems draw the line under standard options and pitches.

global designers have a raft of experience from all areas of the conservatory – manufacture, installations, component engineering, and structural design – they get no greater satisfaction than making it!







*A challenge  
that has  
been met  
with success*



steep



standard



shallow

No two conservatories are exactly the same. So the global conservatory portfolio comprises three alternative ridge details. The popular fixed 25° ridge, sub 25°, and even a detail to allow ridges of up to 35°.

# valley cloaking system



To provide a complete and tidy finish to any valley gutter, a 'clip on' extrusion has been designed. This new profile incorporates side wings that cloak the edges of the glazing bars and polycarbonate in the valley. A bespoke valley end cap totally conceals the lower end of the valley system, and is chamfered to match the end caps.





*Where would we be if Thomas Eddison or Henry Ford were simply content with 'but it's the way its always been done'.*



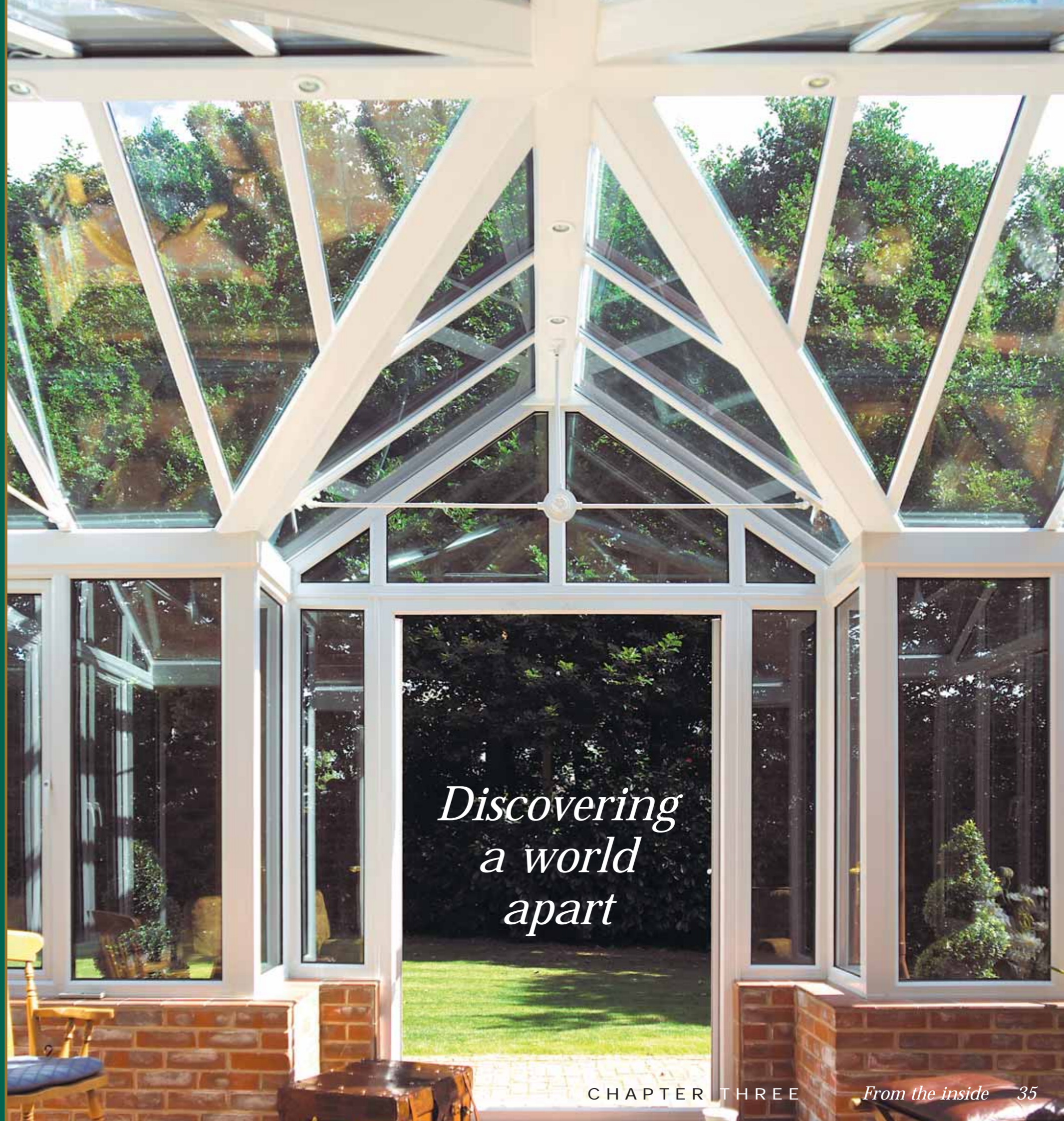


## keep your cool

The days of conservatories being 'hot in summer and cold in winter' are long gone with global conservatories.

You can choose not only your climate, but how you want to achieve control. Roof vents are available either with the traditional pole method, electric switch, or electronic rain sensors that automate the whole process without you having to even think about it!

We also offer a state of the art remote controlled climate control unit - designed specifically for conservatory use in dwarf walls.



*Discovering  
a world  
apart*



## concealed gaskets

"I wanted a pure white conservatory not a black and white striped conservatory"

The guarantee of a pure white conservatory is a global conservatory. The carefully considered gasket seals perform inside the glazing bars, hidden from view.

*Bring light into your life*



# Encapsulate your garden



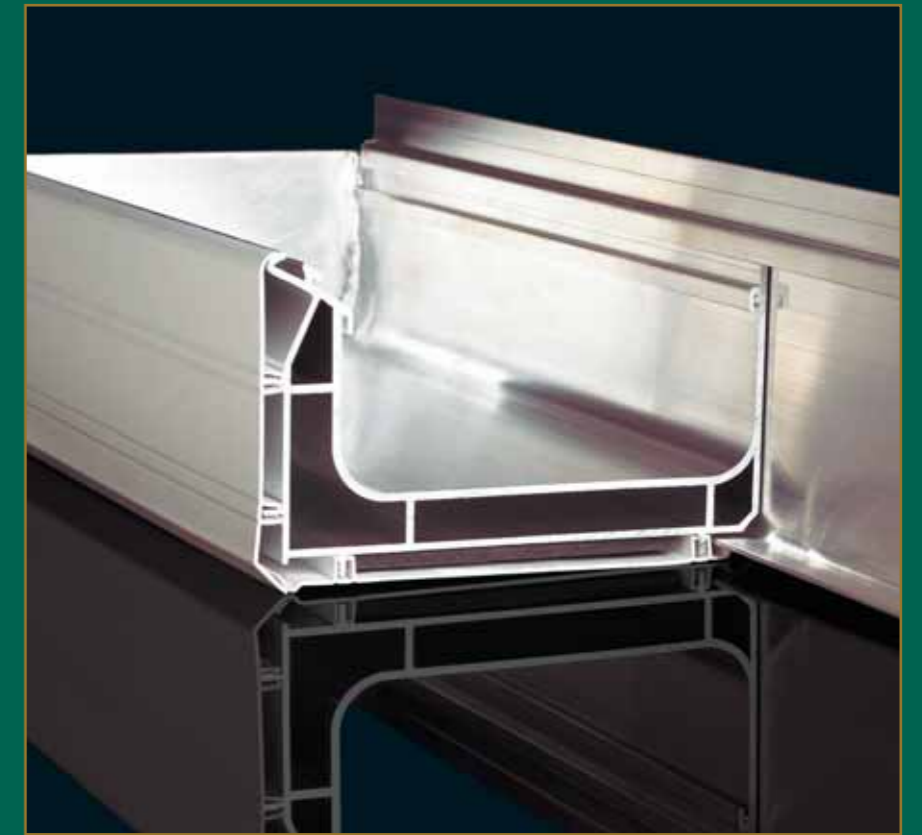
secure from within



When the designers created the blueprints for the global conservatory, one of the initial objectives was to produce a secure conservatory that could be bolted from inside the building, not outside! This pre-requisite also enabled us to use a large M8 bolt.

Once again not only making the installation easier and quicker, but more importantly allowing you the invaluable peace of mind that your roof cannot be unbolted from outside.





## unholy gutter

Simple ideas are often the most effective. global incorporates a fixing plate designed to ensure that all global box gutters are installed quickly and securely. The fixing plate also eliminates the occurrence of weak or inadequate fixings.

With most systems there is an inherent difficulty in trying to apply a bolt in tight areas - once again global improves the structural stability of the conservatory and ensures it is securely integrated with the house.





*Every conservatory has an uncommon and unique relationship with the home.*



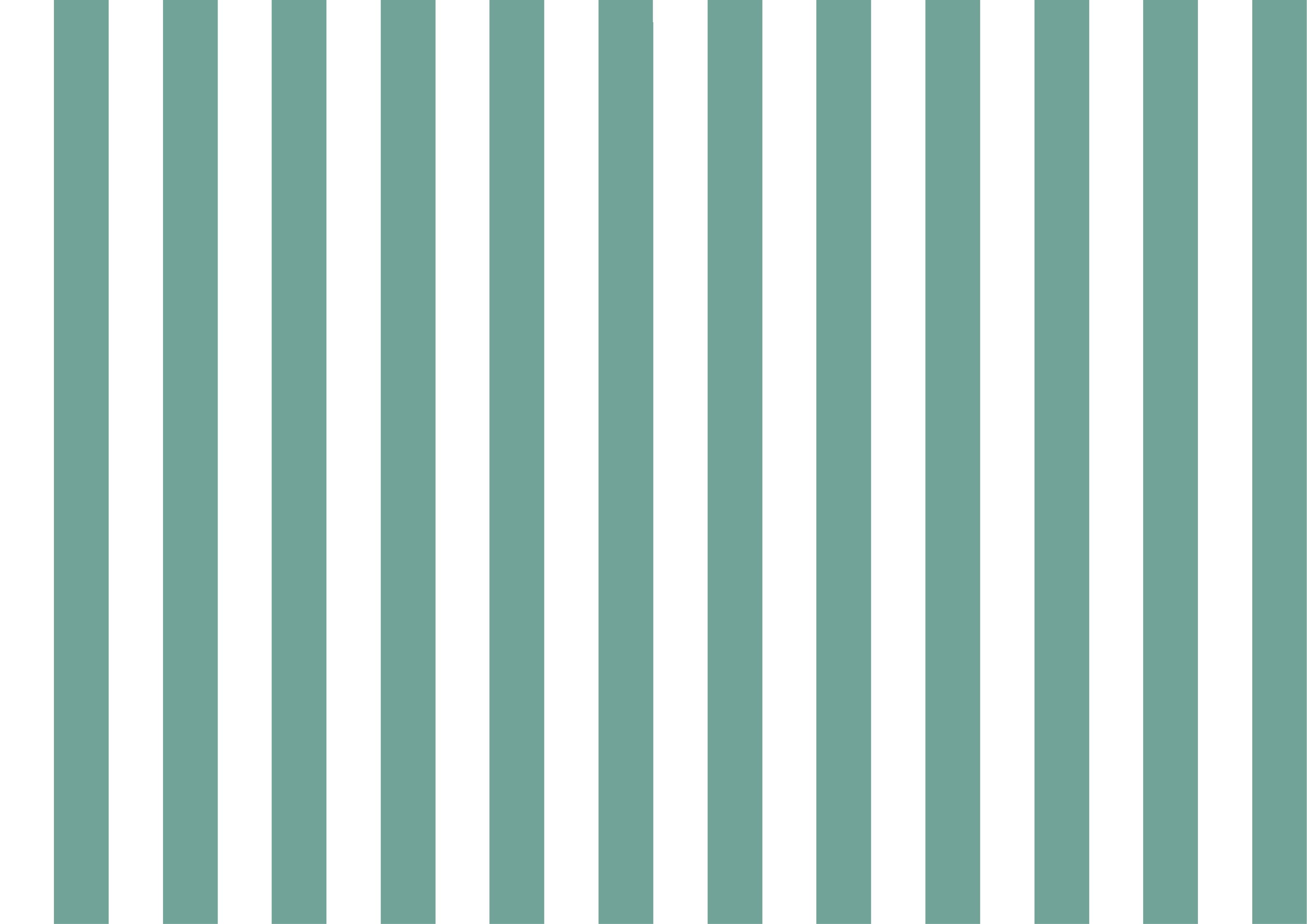
*Nature encourages contemplation.*



## EPILOGUE



*Now it might be easier  
for the reader to capture  
the importance of the  
environment in which a  
home is married to the  
natural beauty of the  
garden with a  
global conservatory.*





# global conservatory roof

*The dream* 

All the information in this book is provided for guidance only and is given in good faith, but without warranty or guarantee of any kind, whether implied or expressed.

Our policy is to continually improve products, therefore methods, materials and changes of specification may be made from time to time without prior notice.

We would like to thank our customers who very kindly gave us permission to photograph their homes.